

# Slide into View







# Pivot to Open Concept Spaces

## RESIDENTIAL & COMMERCIAL

### **Panoramic Doors™**

Let us reintroduce you to your view. The patented Panoramic Door "Slide-Pivot-Stack" system is the only hingeless sliding glass door made to measure for your space. Since 2010, we have been crafting our doors with high-end materials assembled in the USA. Our doors are not only luxurious but distinctive as well. Unlike traditional bi-fold or accordion doors, the Panoramic slide-pivot-stack doors are a hinge-free system of individual panels that allow you to configure the door however you want. Panoramic Doors also feature a Bottom weight distributed track, making for an easy installation process for new construction or remodels. Panoramic Doors are available in various colors and finish options, and feature hardware is guaranteed to be unique to your taste. Perfect for both residential and commercial applications, Panoramic Doors will elevate your space by providing an unforgettable indoor-outdoor experience.

◀ Photo by Jermaine Ee on Unsplash

▶ Photo provided by Work2Gether

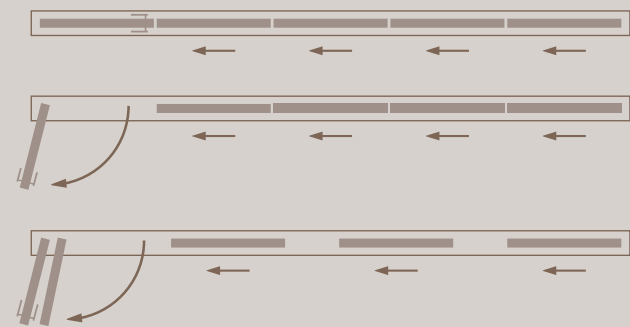




# DISTINCTIVE SYSTEM OPERATION

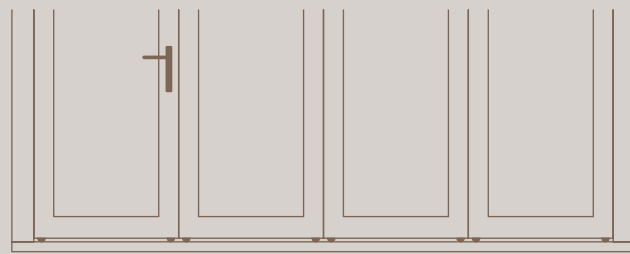
## SLIDE-PIVOT-STACK

Panoramic Doors’ patented system offers a unique way of opening your space. Unlike other wide-opening glass doors, this door system can slide to either side of your door opening, and each individual panel pivots. You can then stack all of your panels to one or both sides, completely opening up your space.



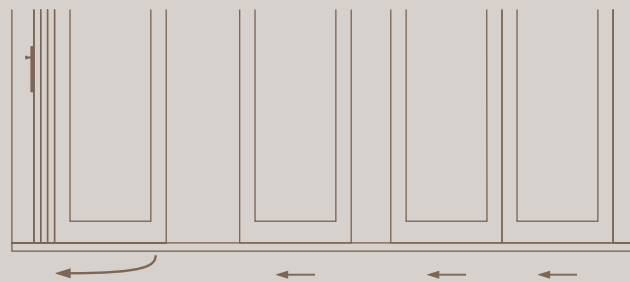
## BOTTOM WEIGHT DISTRIBUTED TRACK

Panoramic Door panels are designed in a way that all the weight of the panels rests on the bottom track. This unique feature provides an advantage over other traditional bi-fold doors. Due to the weight distribution, our door panels are easier to install and require less structural support whether planning a new construction or a home remodel project.



## HINGELESS DESIGN

Panoramic Doors’ “Slide-Pivot-Stack” system is a unique and innovative way to create large, wide-opening doors and windows. This design allows the panels to slide to the end and then swing out, which enables them to operate independently. This design lets you position each panel for maximum airflow and foot traffic control.







# SIGNATURE ALUMINUM DOOR

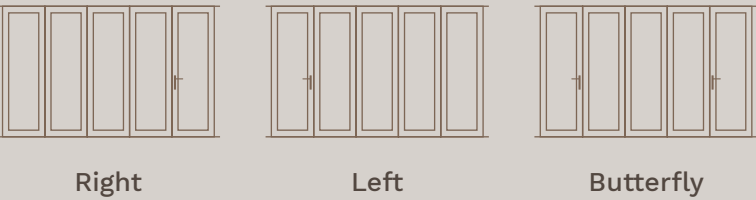
Panoramic Doors’ Signature Aluminum Series is a distinctive product for anyone who wants total versatility in design, color, and options. The Signature Aluminum Door has been our go-to system for over a decade. With the ability to slide, pivot, and stack, it has superior functionality over hinged bi-fold doors. The Signature Series aluminum door comes in various colors and configurations. We offer a wood-clad finish or a wood grain powder coat finish for a more elegant look. It is widely recognized as the premiere door for open-concept living.

## KEY FEATURES

- **“Slide-Pivot-Stack” patented design**
- **Hingeless construction**
- **Made in the USA**
- **Made to measure**
- **Florida Building Code approval**

## DOOR CONFIGURATION

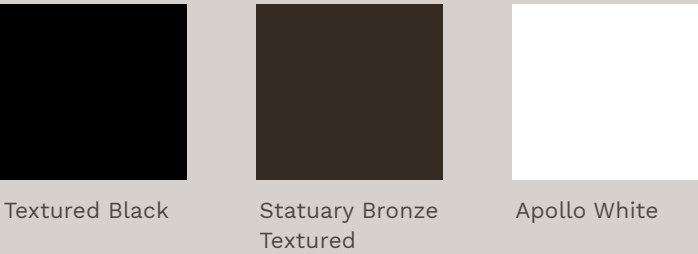
The Signature Aluminum Door is available with three different main door placements. You can have your main door located on the right or left sides or opt for butterfly with main doors on both ends of the system.



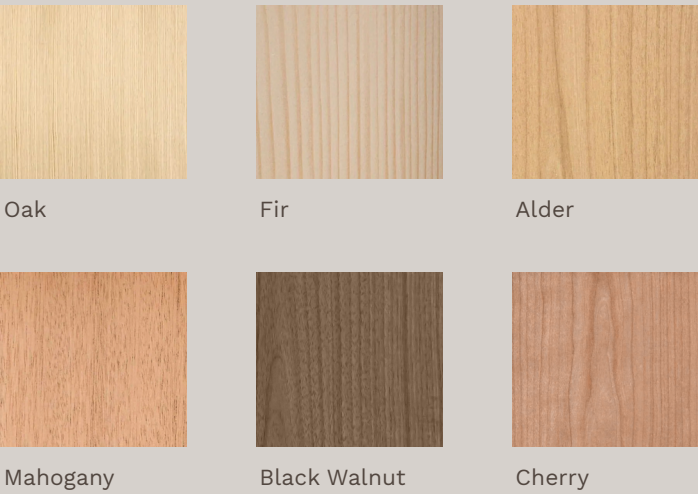
## DOOR SPECIFICATIONS

Max System Width	Unlimited
Max System Height	10 ft
Max Panel Width	40 in
Swing Door One End	Yes
Swing Door Both Ends (Butterfly)	Yes
U-Factor	0.35
Wood U-Factor	0.34
SHGC	0.17
Florida Building Code	FL42251.1

## STANDARD COLORS

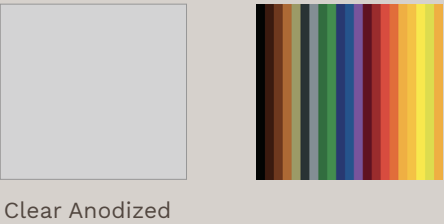


## SPECIAL ORDER WOOD OPTIONS



## SPECIAL ORDER

## 200+ RAL COLORS







# ABSOLUTE VINYL DOOR

The Absolute Vinyl Door is a great option to match new or existing vinyl windows, featuring the same clean design and beauty as the Signature Aluminum Doors. Crafted with high-quality aluminum-reinforced extruded vinyl, it is designed for strength & performance. If you want a two-tone experience, you can select different options for your interior and exterior color and finish. This unique ability lets you design your room-to-room transitions to fit perfectly in any space. Special attention is also paid to the doors' thermal efficiency, making this one of our most energy-efficient options.

## KEY FEATURES

- **Aluminum reinforced extruded vinyl for durability and performance**
- **Concealed multi-point locking system for ease of operation and security**
- **High thermal efficiency**
- **Option to choose different interior and exterior finishes**

## DOOR CONFIGURATION

The Absolute Vinyl Door is available with two different main door placements. You can have your main door on the system's right or left sides.



Right

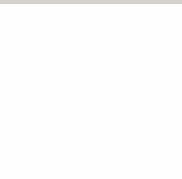


Left

## DOOR SPECIFICATIONS

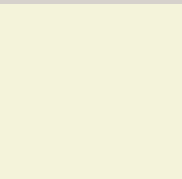
Max System Width	19.5 ft
Max System Height	8 ft
Max Panel Width	38 in
Swing Door One End	Yes
Swing Door Both Ends (Butterfly)	No
U-Factor	0.29
SHGC	0.17 - 0.18

## STANDARD COLORS



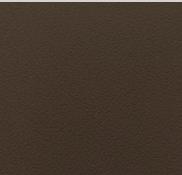
White

## UPGRADED COLORS

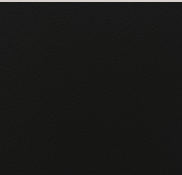


Beige

## LAMINATED COLORS



Bronze



Black





# COASTAL STORM DOOR

Beauty Against the Beast. Designed for strength and impact resistance, our Coastal Storm Door keeps the elements at bay so your interior comfort will remain unaffected even when seasons or temperatures change. With a reinforced frame and 6-point locking mechanism, the Coastal Storm Door is engineered to withstand hurricane winds, heavy rain, and flying debris. The Coastal Storm Door has been through rigorous testing to ensure you get that gorgeous view for clear skies and total protection from the storm. This is the only independent “Slide-Pivot-Stack” panel door system with hurricane approval for High Velocity Hurricane Zone (HVHZ) by the Florida Building Code.

## KEY FEATURES

- **Design Pressure Rating, DP 70**
- **Florida Building Code approved**
- **Impact (HVHZ) options available with laminated impact glass**
- **Steel reinforcement**
- **Overlapping T-sash**
- **6-point locking system**

## DOOR CONFIGURATION

The Coastal Storm Door is available with three different main door placements. You can have your main door located on the right or left sides or opt for butterfly with main doors on both ends of the system.



Right



Left

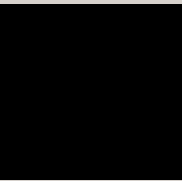


Butterfly

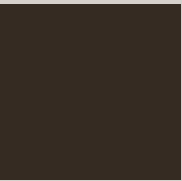
## DOOR SPECIFICATIONS

Max System Width	48 ft
Max System Height	10 ft
Max Panel Width	36 in
Swing Door One End	Yes
Swing Door Both Ends (Butterfly)	Yes
U-Factor	0.4
SHGC	0.18
Florida Building Code	FL42307.1

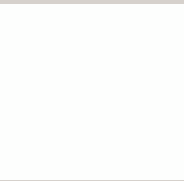
## STANDARD COLORS



Textured Black



Statuary Bronze  
Textured



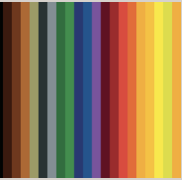
Apollo White

## SPECIAL ORDER



Clear Anodized

## 200+ RAL COLORS







# CHAMBERLIN DOOR

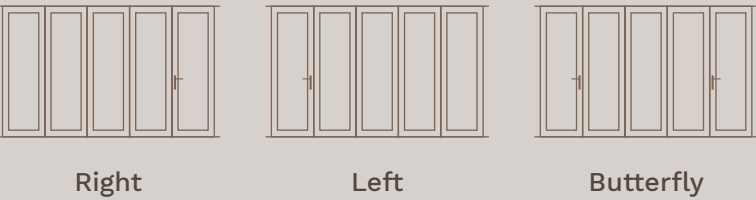
The Chamberlin Series is all about energy efficiency and sustainability. Using the same frame profile as our nationally beloved Signature Series Aluminum door, enhanced with foam insulation, the Chamberlin offers additional thermal efficiency with some of the best ratings of any dual-pane aluminum sliding door.

## KEY FEATURES

- **Design Pressure Rating, DP 50**
- **California Title 24 compliant**
- **Florida Building Code approved**
- **Enhanced energy efficiency with foam insulation**

## DOOR CONFIGURATION

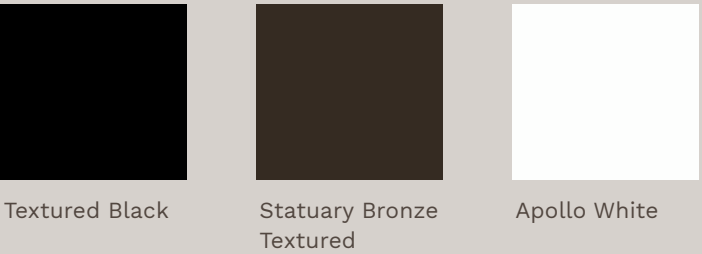
The Chamberlin Door is available with three different main door placements. You can have your main door located on the right or left sides or opt for butterfly with main doors on both ends of the system.



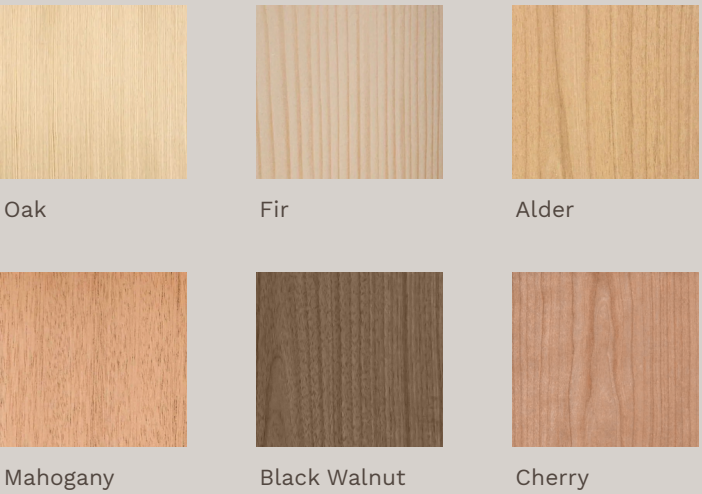
## DOOR SPECIFICATIONS

Max System Width	Unlimited
Max System Height	10 ft
Max Panel Width	40 in
Swing Door One End	Yes
Swing Door Both Ends (Butterfly)	Yes
U-Factor	0.29
Wood U-Factor	0.27
SHGC	0.17 - 0.18
Florida Building Code	FL42298.1

## STANDARD COLORS

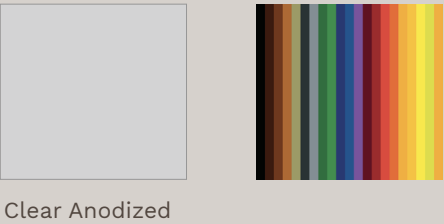


## SPECIAL ORDER WOOD OPTIONS



## SPECIAL ORDER

## 200+ RAL COLORS







# CHAMBERLIN XL

Boasting a newly designed frame with an overlapping panel, the Chamberlin XL offers additional thermal efficiency with some of the best ratings of any sliding glass system. Adding triple-pane glass allows the Chamberlin XL to surpass building energy efficiency standards for the harshest conditions. We constantly monitor state regulations and requirements to ensure this door can meet the energy standards of all 50 States.

## KEY FEATURES

- **Design Pressure Rating, DP 50**
- **California Title 24 compliant**
- **Florida Building Code approved**
- **Standard triple pane glass package**

## DOOR CONFIGURATION

The Chamberlin XL Door is available with three different main door placements. You can have your main door located on the right or left sides or opt for butterfly with main doors on both ends of the system.



Right



Left

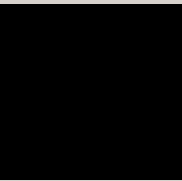


Butterfly

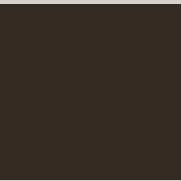
## DOOR SPECIFICATIONS

Max System Width	Unlimited
Max System Height	10 ft
Max Panel Width	40 in
Swing Door One End	Yes
Swing Door Both Ends (Butterfly)	Yes
U-Factor	0.25
SHGC	0.16
Florida Building Code	FL42297.1

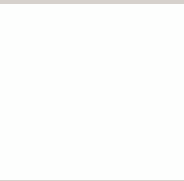
## STANDARD COLORS



Textured Black

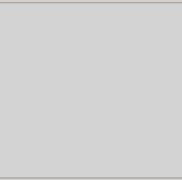


Statuary Bronze  
Textured



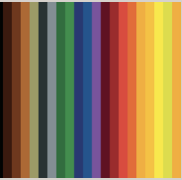
Apollo White

## SPECIAL ORDER



Clear Anodized

## 200+ RAL COLORS







## CORNER DOOR

If you need to add a touch of the extraordinary to your design, we have a solution for you. Our post-less Corner Door system can seamlessly extend across two walls, creating a stunning look, perfect for various settings, such as offices, classrooms, restaurants, and other areas where you want to make a lasting impression.

### KEY FEATURES

- “Slide-Pivot-Stack” patented technology
- Two main swing doors on every system
- Postless view

### DOOR SPECIFICATIONS

Max System Width	Match to System
Max System Height	10 ft
Max Panel Width	40 in
Swing Door One End	Yes
Swing Door Both End	Yes

## FLAG DOOR

This spectacular configuration can be made by combining a Panoramic Door and a Panoramic Window with a post-less intersection. This is a great way to expand the feel of your kitchen to create the ultimate indoor/outdoor dining experience right at home.

**Note:** This configuration is only available with the Signature Aluminum Door and Pass-Through Window.

### KEY FEATURES

- “Slide-Pivot-Stack” patented technology
- Door/window system combination
- Conversational pass-through

### DOOR SPECIFICATIONS

Max System Width	Match to System
Max System Height	10 ft
Max Panel Width	40 in
Swing Door One End	Yes







# PASS-THROUGH WINDOWS

Enhance your project with a sliding and stacking pass-through window, extending the open feel of your Panoramic Door. Our window systems, like our doors, offer great features, improving home or business views. Add transom windows for an extra accent. Enjoy uninterrupted sightlines and the popular pass-through window look. Our Panoramic windows match our doors in quality and luxury materials.

## KEY FEATURES

- Available in both aluminum & vinyl
- Interlocking tongue-n-groove for superior seal and security
- Concealed multi-point locking system for ease of operation and security

## WINDOW SPECIFICATIONS

Max System Width	Unlimited
Max System Height	8 ft
Max Panel Width	40 in
Swing Window One End	Yes
Swing Window Both Ends	No

# PICTURE WINDOWS

Introducing our latest addition - the matching picture window. Our fixed pane window is an excellent choice if your design involves stationary windows placed near or above your Panoramic Door. This creates a seamless, cohesive floor-to-ceiling look that maintains the panoramic view.

## KEY FEATURES

- Customizable colors
- Available in Aluminum
- Variety of glass options
- Flexibility with sizing

## WINDOW SPECIFICATIONS

Max System Width	Matched to System
Max System Height	8 ft







# RETRACTABLE SINGLE & DOUBLE SCREENS

Our retractable screen is the perfect addition to any door or window system. Constructed from sheer and durable fibers, it offers both protection and elegance. Unlike most roll-up screens that are bulky and spring-loaded, our pleated design allows for partial or complete closure, depending on your preference. The sleek and discreet design ensures that the screen is not obtrusive when not in use. Choose to open as many or as few panels as you like, depending on your needs for the day.

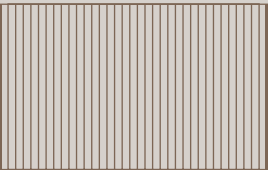
Cover your area with one screen up to 16ft with a single retractable screen, or add a second retractable screen to extend your coverage to up to 32ft.

## KEY FEATURES

- **Kevlar base for strength and performance**
- **Provides solar protection for your fabrics and hardwood floors**
- **Painted to match your Panoramic Door**
- **Durable pleated screen**
- **Up to 16ft wide for a single screen and 32ft for a double screen**

## SCREEN CONFIGURATION

Our retractable screens are tested to make sure the only thing that gets in is the breeze—available in 16ft single screen and 32ft double screen. All screens are placed on the system's interior and slide on their own track.



16 ft Single Screen



32 ft Double Screen

## SCREEN SPECIFICATIONS

Max Screen Width	16 ft
Max Screen Height	10 ft
Max Double Screen Width	32 ft
Max Double Screen Height	10 ft
Visibility Through Screen	Yes



# DOOR HANDLES

Explore our curated selection of carefully designed hardware to complement your Panoramic Door and elevate your personal style.

## Cityscape

Cityscape complements white vinyl and aluminum doors seamlessly, available in White.



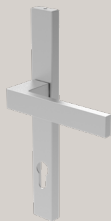
White

## Lakeview

Lakeview showcases a sleek square form, perfect for minimalism, available in Black and Silver.



Black



Silver

## Estate

Estate handles provide a classic feel and a comfortable grip, in Black and Silver.



Black



Silver

## Summit

Summit offers keyless ease and safety for your Panoramic Door system, in Black and Silver.



Black



Silver

# PASS-THROUGH WINDOW HANDLE

Sleek Panoramic Pass-Through Window Handles in Black, Silver, or White offer effortless operation, enhancing your window with style and security.



Black



Silver

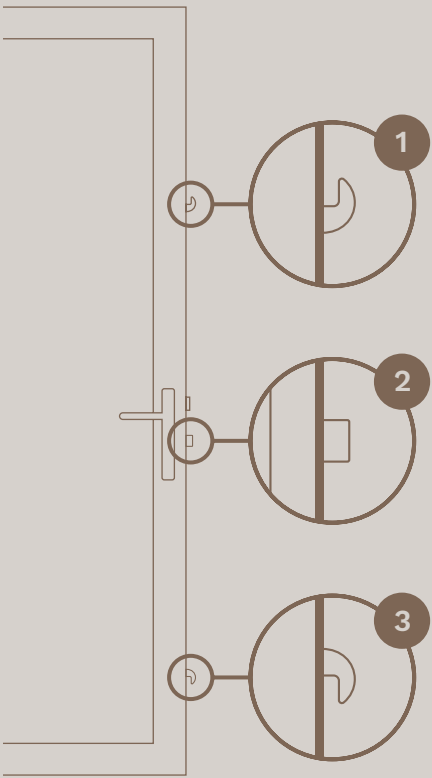


White

# MULTI-POINT LOCKING SYSTEM

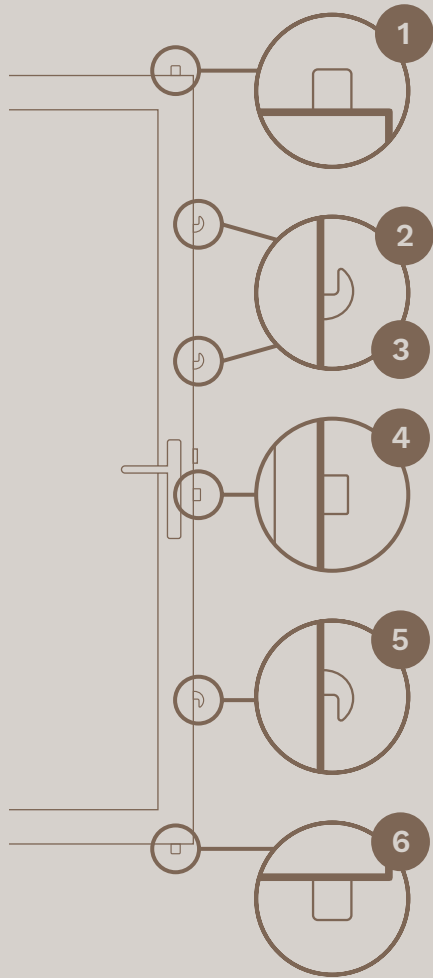
## 3-Point Locking System

Security is important. That is why all our doors come with 3-point locking systems on all swing doors. This ensures your doors are locked at the top, middle, and bottom.



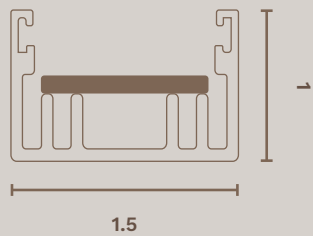
## 6-Point Locking System

For added security, our Coastal Storm Door boasts a 6-point lock system, including sturdy steel bolts and an extra locking hook for maximum strength in tough weather conditions.

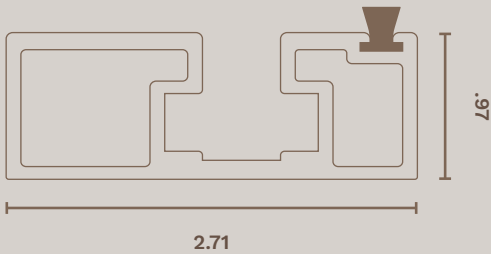




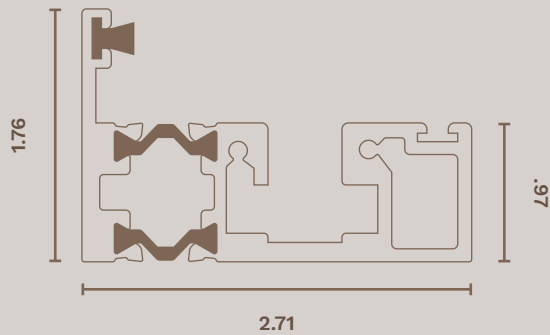
# TRACKS



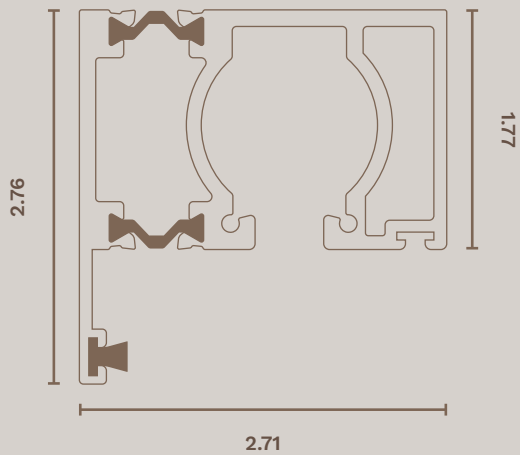
Screen Track



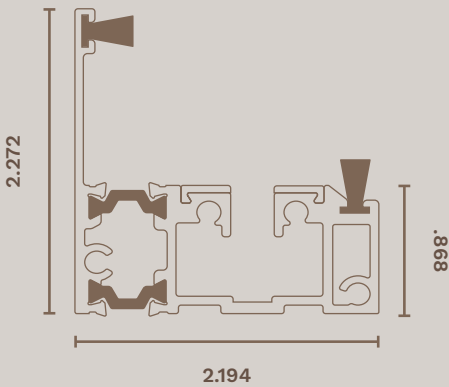
Flush Track



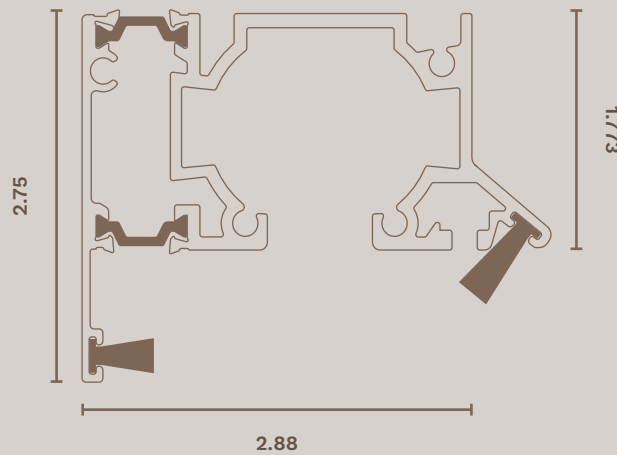
Upstand Track



Top Track



Coastal Storm Door Bottom Track



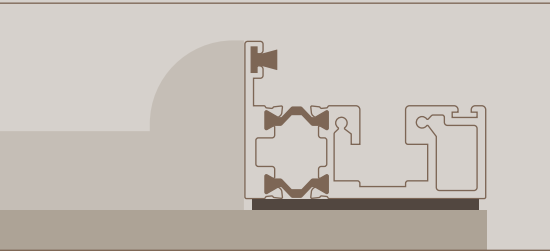
Coastal Storm Door Top Track

## Track Placement

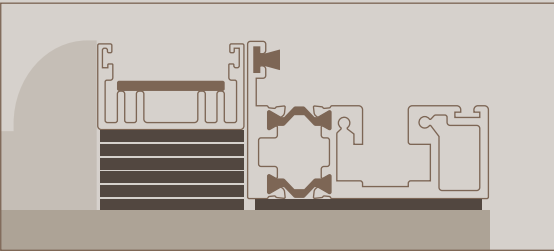
Depending on your design requirements, the bottom track can either be set on top of the subfloor or embedded into the floor.

Here are a few of the most common placements for both the upstand track and the flush track.

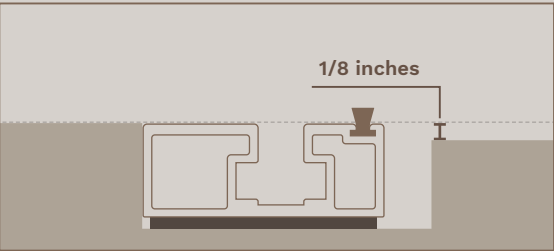
Please consult with your contractor or sales representative as to the suitability of both the track and the placement of the bottom track.



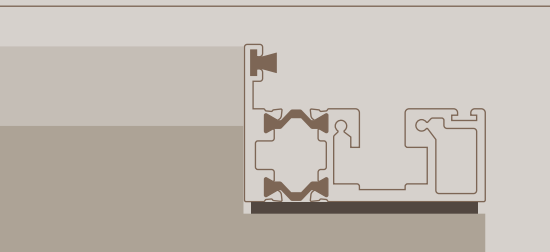
Upstand track on subfloor



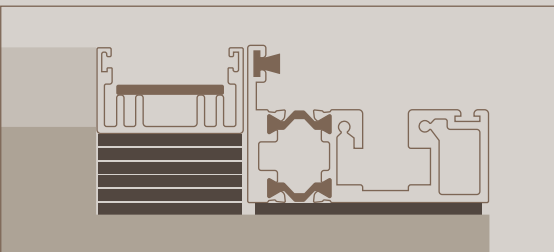
Upstand track and screen on subfloor



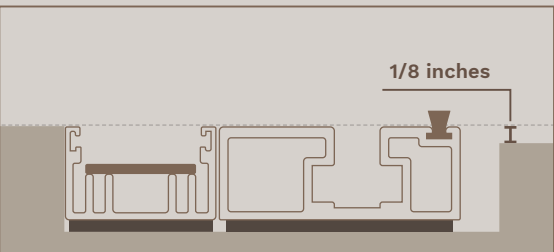
Flush track inset in subfloor



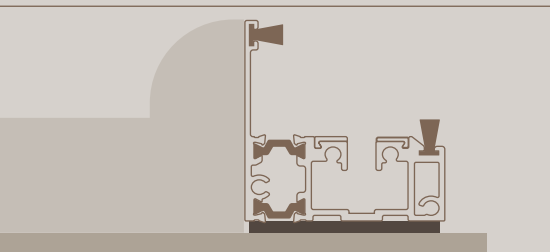
Upstand track on cut subfloor



Upstand and screen track on cut subfloor



Flush and screen track inset in subfloor



Coastal Storm Door Bottom track on subfloor

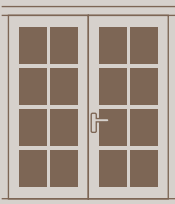


# GLASS TREATMENT OPTIONS

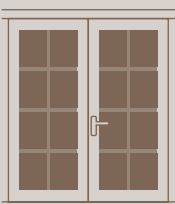
Panoramic Doors offers a variety of glass treatments to suit your needs. You can select obscure glass in several different patterns for all panels or apply the treatment to select panels while keeping the rest clear. We also offer Turtle Glass to our coastal customers. Turtle Glass is treated with a special coating that limits reflective glare from outside sources and how much light is transmitted through the glass from the interior.

## GRID OPTIONS

Looking to add Grids to your Panoramic Door system? We have two options to meet your tastes.



- Exterior Grid**
- SDL - Simulated Divided Lights
  - Exterior grid system flush off the sash

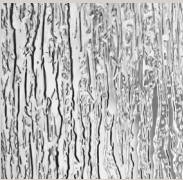


- Interior Grid**
- GBG - Grids Between Glass
  - Interior grid system between glass panels, offering a variety of design options.

## GLASS TREATMENTS



Obscure



Rain Glass

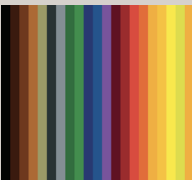


Satin Etch



Turtle Glass

## GLASS TINTS



100+ Tint Colors

# RESOURCE GUIDE & CONTACT INFORMATION

### Service + Technical Support

For questions regarding parts, product operation, or repair.

**Days:** Monday - Friday  
**Time:** 8 am - 5 pm Central  
**Phone:** 760-616-5018  
**Email:** [service@panoramicdoors.com](mailto:service@panoramicdoors.com)

### Customer Sales

For quotes, product questions, and purchasing support. Our customer sales team is available by both email and phone.

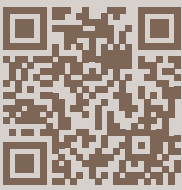
**Days:** Monday - Saturday  
**Time:** 8 am - 7 pm Central  
**Phone:** 817-952-3500  
**Email:** [sales@panoramicdoors.com](mailto:sales@panoramicdoors.com)

### Marketing Inquires

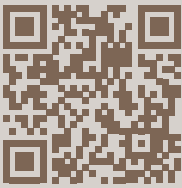
For questions regarding promotional and advertising opportunities.

**Email:** [marketing@panoramicdoors.com](mailto:marketing@panoramicdoors.com)

Scan the QR Codes below to find more information on our website.



Scan QR Code to see our **Showroom Location Map** on our website



Scan QR Code to visit our **Installation Resources** page on our website

## CERTIFICATIONS & ASSOCIATIONS



Miami-Dade County Approved



Florida Building Code Compliant



Texas Department of Insurance

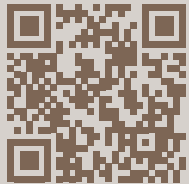


California Title 24 Compliant



# Open up to the Outdoors

Panoramic Doors Slide-Pivot-Stack into any configuration to connect you seamlessly with the view



**Scan QR Code to  
request a quote**