



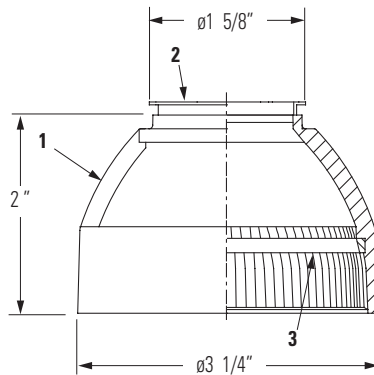
Metallics™ PAR-Tech® PAR20 Ring Shade

**Lytespan®
Track Lighting**

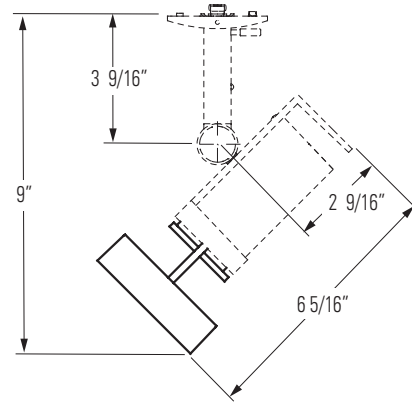
8228

0499

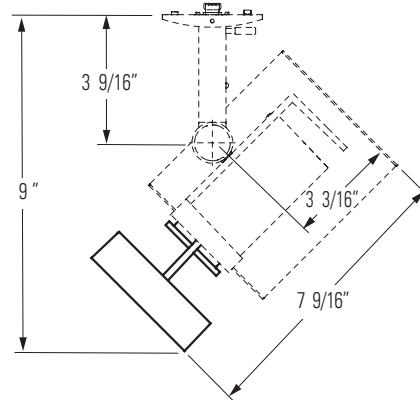
TYPE:



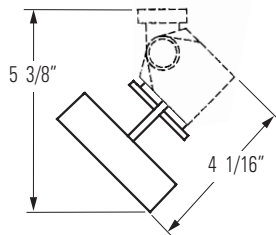
RING PAR20 WITH METALLICS™ INCANDESCENT/HALOGEN
FIXTURES 8701 & 28701 (PROSPEC)



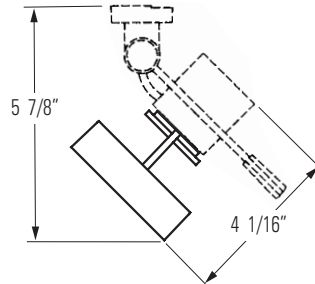
RING PAR20 WITH METALLICS™ ELECTRONIC METAL HALIDE
FIXTURE 8704E



RING PAR20 WITH PAR-TECH®
INCANDESCENT/HALOGEN
FIXTURE 8201



RING PAR20 WITH PAR-TECH®
INCANDESCENT/HALOGEN
FIXTURE 8202



Ordering Information

Catalog No.	Finishes	Lamps
<input type="checkbox"/> 8228 WH	Matte White	INCANDESCENT: PAR20 50W Max. (When used on fixtures 8201, 8202, 8701, & 28701) METAL HALIDE: PAR20 39W (When used on fixture no. 8704E)
<input type="checkbox"/> 8228 TM	Dark Titanium	
<input type="checkbox"/> 8228 NM	Natural Metal	
<input type="checkbox"/> 8228 BK	Matte Black	

Features

- Shade:** Die-cast aluminum.
- Neck Flange:** Cold rolled steel, zinc-plated. Used to attach shade to fixture, without tools.
- Groove:** To connect optional Accessory Holder to shade.

Options and Accessories

PAR20 Accessory Holder (8582) & Accessories (AF25 & AF25HC Series). Order separately (See Lightolier Specification Sheet 8582).

Finish

All painted finishes: White, Titanium, or Black baked enamel. Natural Metal is Brushed Metal with protective Clear Coat.

Labels

UL; I.B.E.W.

WE RESERVE THE RIGHT TO CHANGE DETAILS OF DESIGN, MATERIALS, AND FINISH, IN ANY WAY.

LIGHTOLIER a GENLYTE THOMAS company.
631 Airport Road, Fall River, MA 02720
(508) 679-8131 • Fax (508) 674-4710

Copyright 1999

LIGHTOLIER®



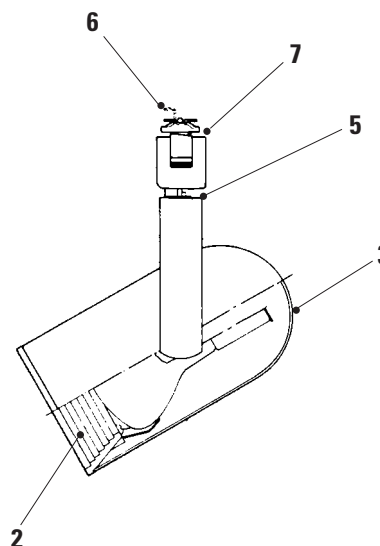
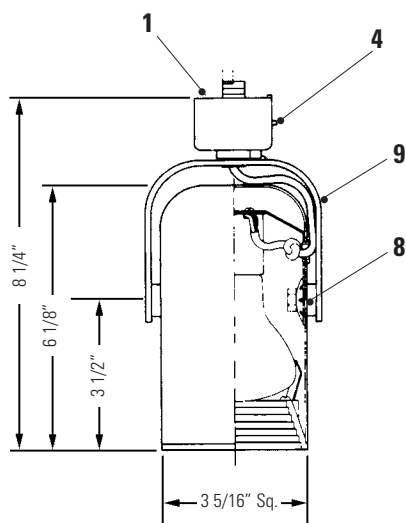
Geospot

**Lytespan®
Track Lighting
System**

6250
R397

TYPE:

6250
6251



Ordering Information

Catalog No.	Mounting	Finish	Lamps
<input type="checkbox"/> 6250	All Lytespan Track Systems	Matte White	75W R20, 75W PAR16 (T-H), 50W PAR20 (T-H)
<input type="checkbox"/> 6251		Matte Black	

Features

- Lytespan Attachment Fitting:** molded polycarbonate. Integral color. Fitter twists onto track and locks on.
- Step Baffle:** die-cast aluminum with stepped surface for low brightness. Matte black finish.
- Housing:** .050" aluminum.
- Push Tab:** molded polycarbonate. Detaches unit.
- Pivot Mounting:** tensioned; 350° stop for horizontal adjustment.
- Movable Brass Contact:** extends for connection to 2nd circuit in Advent Lytespan Track.
- Polarity Key**
- Trunion Mounting:** tensioned with internal spring washer and vibration-resistant nut. 90° vertical adjustment each way.
- Yoke:** .093" steel.

Electrical

Porcelain socket, medium base, nickel plated screw shell. No. 18 braided SF-1 leads.

Finish

All painted finishes baked enamel.

Labels

UL; I.B.E.W.

Patents

U.S. Patent No. 3,496,518. Foreign patents granted.

WE RESERVE THE RIGHT TO CHANGE DETAILS OF DESIGN, MATERIALS AND FINISH, IN ANY WAY THAT WILL NOT ALTER INSTALLED APPEARANCE OR REDUCE FUNCTION AND PERFORMANCE.

LIGHTOLIER a GENLYTE company
631 Airport Road, Fall River, MA 02720
(508) 679-8131 • FAX (508) 674-4710

Copyright 1997

LIGHTOLIER®